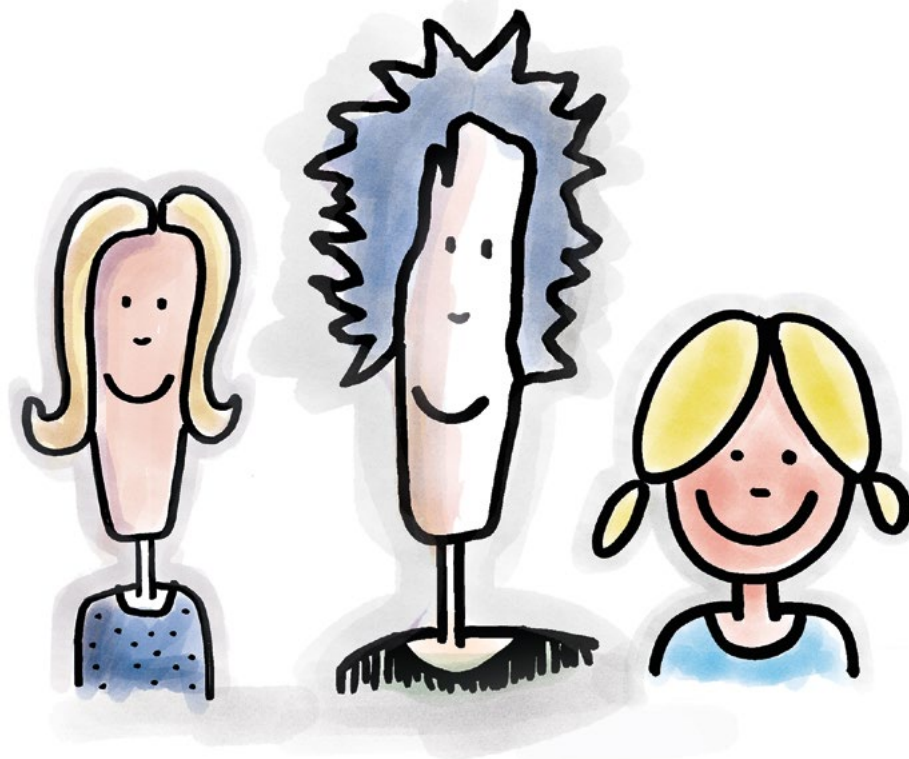


INFORMATION BROCHURE INTENDED MAINLY FOR
CHILDCARE CENTRES, DAY CARE CENTRES AND PARENTS
TAKING PART IN THE MEASURE TO ASSESS AND IMPROVE
EDUCATIONAL QUALITY (0-5 YEAR OLDS)

.....

EDUCATIONAL QUALITY IN CHILDCARE ESTABLISHMENTS



.....

Original text in French

EDUCATIONAL QUALITY...



All educational childcare providers recognized under the educational childcare act are required to apply an educational program.

The educational program guides practices based on the values, mission and educational philosophy of the childcare establishment to support the global development of children and foster their educational success.

A quality educational childcare establishment...

- Recognizes children's needs and responds to them in an appropriate way; interacts appropriately with them, taking into consideration their respective level of development and fosters their global development and educational success.
- Intervenes at all times according to the following five basic principles:
 - ▶ A partnership between the childcare establishment and parents is essential to the child's global development;
 - ▶ Each child is unique;
 - ▶ Children are the main actors in their development;
 - ▶ Children learn through play;
 - ▶ The child's development is a comprehensive, integrated process.
- Applies an educational program based on the following four dimensions of quality:
 - ▶ Lay-out of premises and materials (for example, appropriate and stimulating materials to play with, adequate indoor and outdoor play areas);
 - ▶ Interactions between educator staff and children (for example, positive and respectful atmosphere, support for exploration and for conversational initiatives);
 - ▶ Children's lived experience (for example, a variety of play periods, effective routine and transition activities);
 - ▶ Interactions between educator staff and parents (for example, conveying information, cooperation).

Ensuring that childcare establishments provide children with quality educational services

The educational quality of childcare services is a constant concern for the Ministère de la Famille. For this purpose, it implemented a measure for quality evaluation and improvement of the global educational quality.

ASSESSING EDUCATIONAL QUALITY



AT ALL CHILDCARE ESTABLISHMENTS IN QUÉBEC FOR THE PURPOSE OF IMPROVING IT

WHERE?

- Childcare centres (CPE)
- Subsidized day care centres
- Non-subsidized day care centres

Participation is mandatory, but not a condition for licence renewal. Home childcare providers and those of First Nations and the Inuit community are not included in the assessment for the time being; other measures will eventually be recommended to enable evaluation of all childcare establishments in Quebec.

WHY?

- To ensure that children receive quality educational services that foster their global development and educational success.
- To ensure that they are complying with the *Educational Childcare Act* (the “Act”). All educational childcare providers **are required**, under section 5.1 of the Act, to participate in the process to assess and improve the educational quality of childcare.

HOW?

Through measurement instruments that are scientifically recognized and focused specifically on assessing educational quality, in line with *Accueillir la petite enfance*, the reference document of the Ministère de la Famille.

An educational quality assessment report is given to each childcare establishment and followed up by the Ministère de la Famille.

WHEN?

The process will be gradually rolled out in the childcare network. The main focus is on CPEs and daycares (groups of children aged 0 to 5).

The Ministère de la Famille chose a firm to assess educational quality at childcare centres and day care centres (groups of children from 0 to 5 years old).

The Ministère de la Famille provides the evaluation firm with a list of childcare establishments to be evaluated based on an equitable allocation of time across the types of childcare establishments and regions. The evaluation firm directly contacts the childcare establishments concerned. This brochure is intended mainly for the childcare centres and day care centres that are being assessed. Details can be found in the following pages.

THIS ASSESSMENT...

- is not a compliance inspection (health and safety rules)
- is not a performance appraisal of the educators
- is not an assessment of the children’s development

FRAMEWORK FOR APPLICATION...

MEASURE TO ASSESS AND IMPROVE EDUCATIONAL QUALITY AT CHILDCARE CENTRES AND DAY CARE CENTRES (GROUPS OF 0-5 YEAR OLDS)



WHAT IS ASSESSED?

- The application of the four dimensions of the quality of processes, as well as certain elements of structural quality (for example, management practices, training and experience).
- The dimensions of quality are as follows:
 1. Quality of premises layout;
 2. Quality of the interactions between the educational staff and the children;
 3. Quality of child observation and planning practices;
 4. Quality of interactions between the childcare establishment staff (educators and manager) and the parents.

HOW DOES THE ASSESSMENT TAKE PLACE?

- A team of evaluators go by appointment to the childcare establishment to assess educational quality using various quality measurement instruments, particularly the Classroom Assessment Scoring System (CLASS) to observe interactions with the children, between the educational staff and the children, as well as a tool for assessing the quality of the lay-out of the premises. The other instruments consist of interview questions for educators and managers, and a parent questionnaire.
- The result relates to the childcare establishment as a whole. The number of groups to be evaluated varies according to the following sampling rule:
 1. A minimum of one group from each age group served by a childcare establishment must be evaluated;
 2. The number of groups assessed must be sufficient to include at least 50% of the children in that childcare establishment.
- The evaluators are trained and certified to use the measurement instruments.
- The assessment is done in one day.
- The next assessment is determined based on the permit renewal date (generally every five years) or sooner if the Ministère de la Famille considers it relevant. As a guide, the assessment is usually done a few months before the licence renewal date.

WHAT HAPPENS AFTER THE ASSESSMENT?

1. An assessment report will be sent to the childcare establishment. This report provides feedback on each of the dimensions of educational quality assessed. The overall results are presented, i.e. for the childcare establishment as a whole.
2. The thresholds must be reached in each of the quality dimensions, with exceptions. Reaching these thresholds is not a condition for licence renewal.
3. The Ministère de la Famille follows up on the results. If the childcare establishment fails to meet all the required thresholds, it must produce an action plan to improve educational quality and participate in a follow-up evaluation.

TYPICAL ASSESSMENT DAY

MORNING

Observation of interactions using the CLASS tool.

About 2 hours with each of the groups concerned

Assessment of lay-out of premises.

30 minutes

AFTERNOON

Semi-directed individual interviews, usually conducted during the children's naptime, with each of the educators whose groups were observed in the morning.

About 60 minutes per interview

These interviews concern child observation practices and planning as well as various points, such as how the childcare establishment operates, and the educators' training and experience.

Questionnaire to be completed by each of the educators whose groups were observed in the morning and by the director. This questionnaire concerns the interactions of the childcare establishment with the parents.

About 10 minutes per questionnaire

Semi-directed interview with the director of the childcare establishment concerning various points such as the management practices, experience and training.

About 60 minutes

DAY OF THE ASSESSMENT

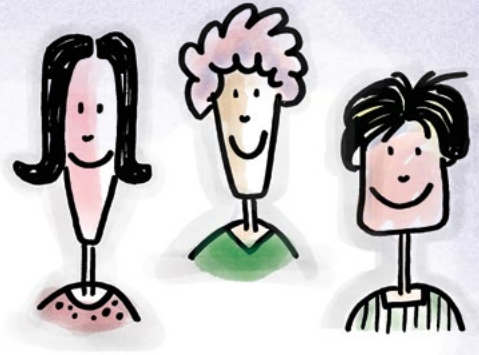
Questionnaire distributed to parents by the director of the childcare establishment concerning their interactions with the childcare establishment. They have 14 days questionnaire after the assessment to answer the questionnaire.

About 10 minutes per questionnaire

ASSESSMENTS ARE MADE BY APPOINTMENT.

SURVEILLANCE CAMERAS

On the day of the assessment, childcare establishments that have surveillance cameras on their premises are asked to turn them off to preserve confidentiality of any data collected and to comply with the applicable laws.



THE EDUCATORS

Educators play an essential role in achieving overall educational quality. In this regard, several elements can guide them, such as the educational program applied in their environment, their skills, training and experience. The quality of their interactions with the children is crucial for their development.

Based on their observations, they gather essential information to accompany children in their learning according to their pace of development, to offer them varied experiences and to provide them with the material adapted to their needs throughout the day.

Why participate?

- Firstly, because participation of the childcare establishment is mandatory. In addition to helping identify the strengths and challenges specific to the childcare establishment in terms of educational quality, this assessment will enable it to implement improvement measures in subsequent years.

What is the role of the educators whose groups were selected?

- Complete and return the questionnaire to the evaluator.
- Answer the evaluator's questions.

Please note that:

This is not a performance appraisal for the educators.

The answers on the questionnaire completed by the educators whose groups were observed, their conversation with the evaluator during the interview and the observation results for the groups of children selected are confidential.

Neither individual results, nor any information allowing the educators to be identified will be sent to the childcare establishment.



THE DIRECTOR

The director of the childcare establishment is responsible for applying the educational program.

The director must ensure that all the staff properly apply the educational program that was filed with the ministère.

Why participate?

- Firstly, because participation in the childcare establishment is mandatory. In addition to helping identify the strengths and challenges specific to the childcare establishment in terms of educational quality, this assessment will enable it to implement improvement measures in subsequent years.

What is the director's role?

- Notify all the staff (including the members of the board of directors or the parents' committee) and the parents that the childcare establishment is taking part in an educational quality assessment.
- Be present and available on the day of the assessment in order to answer questions from the team of evaluators and to assist them in their work, as well as to take part in an interview.
- Send the web link to all the parents so that they can complete the questionnaire about their interactions with the childcare establishment.
- Promote the educators' participation, in particular by allowing them to answer questions during their interviews (generally during the children's naptime) under optimal conditions (free up time for their interview and provide them with a space away from the group of children, if possible).

Important

This is not an inspection.

Answers are confidential.

The assessment report is sent to the childcare establishment and the Ministère de la Famille.



THE PARENTS

Parents are the first educators of their child. They encourage the establishment of a partnership with the educator by providing useful information about their child and by taking interest in their daily life in the childcare establishment.

Collaboration between parents, educators, and all childcare staff is valuable and contributes to the child's development.

The parents' point of view is essential to ensure consistency between the educational actions implemented in the childcare and the parents' experience at home.

Why participate?

- To help their child receive quality educational childcare services.
- To ensure that the childcare establishment is effectively implementing an educational program that helps their child develop across all levels.
- To ensure the evaluation of all dimensions of educational quality. The "quality of interactions between the childcare staff (educators and managers) and the parents" is an essential dimension to achieving this educational quality.
- To give an opinion and thus allow the Ministère de la Famille to establish a full profile of the educational quality in the childcare establishment.

What is the role of the parents?

- Complete the questionnaire within the deadline (14 days). The questionnaire is available online in English and French. The web link to the questionnaire is sent by the director to the parents.

Please note that:

The children are not evaluated or questioned during the assessment of the childcare establishment.

Answers are confidential: The childcare establishment does not have access to the individual answers.

For more information about the measure for educational quality assessment and improvement, please visit the [Ministère de la Famille website](#) or call the Ministère at 1 855 336-8568.

2023

© Gouvernement du Québec

ISBN 978-2-550-94137-8 (PDF - Français)

ISBN 978-2-550-94138-5 (PDF - English)